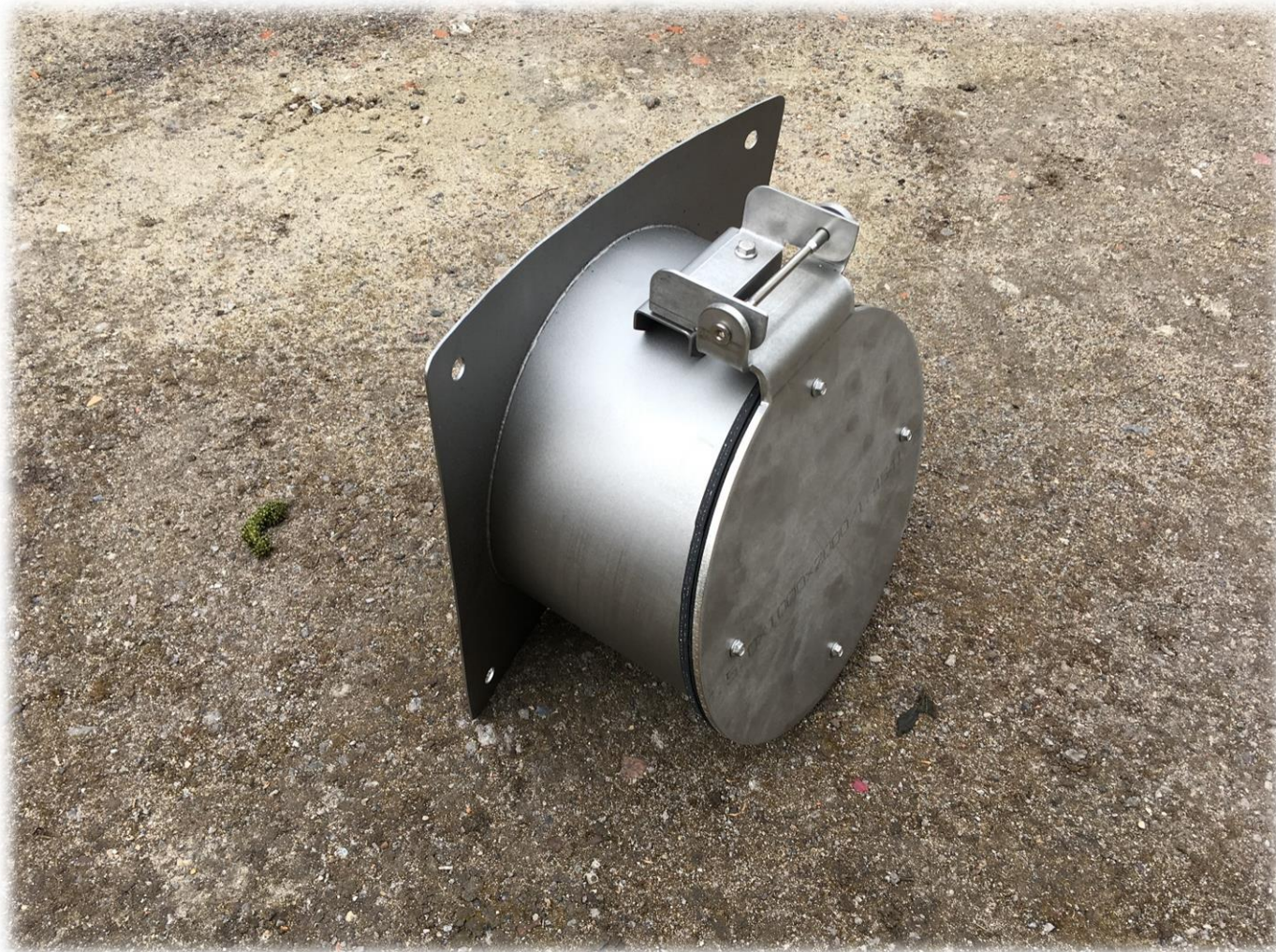


Oblique Steel Flap Valve VKZ-SS



DESCRIPTION:

VKZ-SS flap valves are used wherever protection against backflow is required. Used for surface water, rainwater or sewage in sewage systems, canals and drainage ditches.

Due to the method of mounting, the flaps are available in 3 types:

VKZ-SS-A - with an adapter for a flat or round wall

VKZ-SS-B - with spigot end,

VKZ-SS-K - with flange drilled according to PN10 (or according to customer requirements),

MATERIALS:

Body, flap and hinge: Stainless steel AISI 304/304L - 1.4301/1.4307 or acid-resistant AISI 316/316L - 1.4401/1.4404 or any other depending on customer requirements.

Gaskets: EPDM (or other material depending on working conditions, e.g. NBR, VITON or silicone).

MOUNTING:

Flaps are installed depending on the selected type:

VKZ-SS-A - to the wall through the holes in the adapter using adhesive or mechanical anchors.

VKZ-SS-B - at the end of the pipe by pressing into the socket of the pipe or through a sleeve.

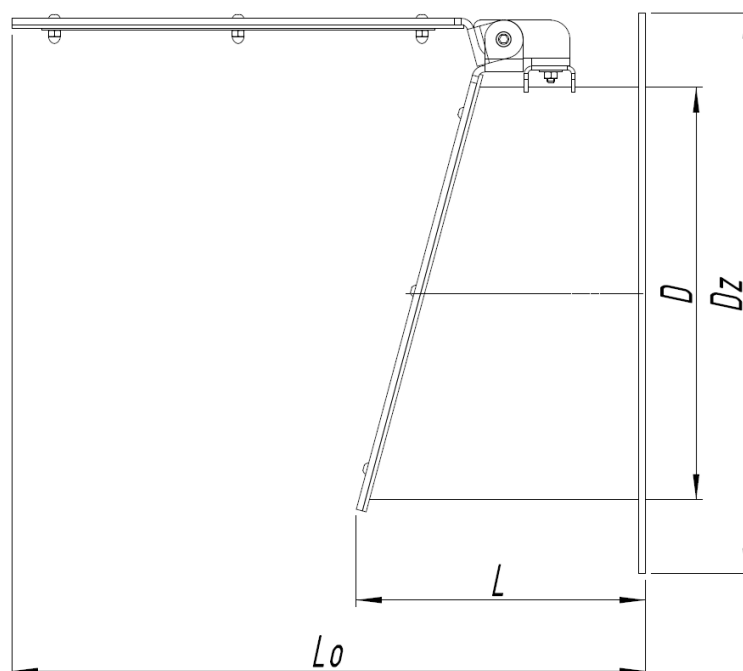
VKZ-SS-K - by flange connection using bolts with a gasket between the flanges.

When mounting to the wall, the seal should be made of a porous EPDM gasket or SIKAFLEX type sealant.

ADDITIONAL OPTIONS:

A number of additional options are available depending on customer requirements. These include, among others, a counterweight for the flap, an opening lock, an opening degree limiter, a closing spring, etc.

STANDARD DIMENSIONS:



Type	Nominal Diameter DN [mm]	External Diameter of Pipe D [mm]	Size of the Adapter/Flange Dz [mm]	Length of Closed Flap L [mm]	Length of Opened Flap Lo [mm]
VKZ-SS 200	200	219,1	320	185	375
VKZ-SS 250	250	273	375	210	440
VKZ-SS 315	315	323,9	440	225	545
VKZ-SS 400	400	406,4	540	255	650
VKZ-SS 500	500	508	645	290	755
VKZ-SS 600	600	600	755	350	790
VKZ-SS 800	800	800	975	525	1150
VKZ-SS 1000	1000	1000	1175	555	1335

*Other sizes available on individual request. It is possible to make a flap of any size.

** Vortico reserves the right to make changes to suit a specific order.

DOCUMENTATION:

Standard documentation delivered with the delivery includes: the national declaration of performance, technical and operational documentation along with the operating and assembly instructions. On request, we provide material certificates, welding documents and other according to the customer's needs.